



Level



Pressure



Flow



Temperature



Liquid  
Analysis



Registration



Systems  
Components



Services



Solutions

## Technical Information

# Dipfit W CPA111

Immersion and process assembly for open and closed tanks with DN 100 flange



### Application

The immersion and process assembly Dipfit W CPA111 is intended for universal use in the following areas:

- Water treatment
- Wastewater treatment

It can be used at pressures up to 4 bar (58 psi).

### Your benefits

- Made of environmentally compatible polypropylene material
- Simple installation and removal of sensor holder thanks to bayonet lock
- Flexible immersion depth thanks to adjustable flange; additional bayonet locking mechanism assures easy installation and removal of assembly
- Three sensor mounting positions for pH/ORP and temperature sensors in standard length of 120 mm

## Function and system design

### Function

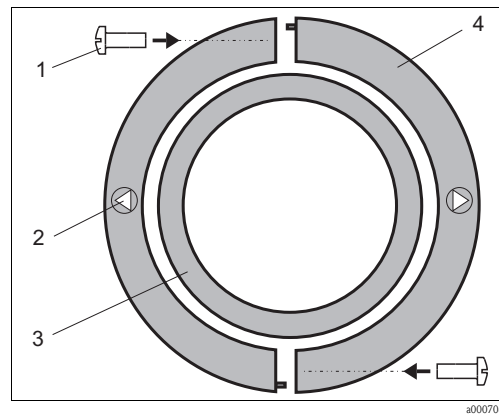
The assembly can be mounted using a standard DN 100 flange (mounting version A). Additional captive star handle screws allow to attach the assembly to a mounting frame for convenient installation on basin or channel rims.

The adjustable flange (mounting version B) can be used to adapt the immersion depth to local conditions. The adapter for the adjustable flange is firmly attached in the desired position on the immersion tube. The bayonet lock integrated in the flange allows easy installation and removal of the assembly without the need to dismantle the flange.

A special DN 100 pressurized flange (mounting version C) is used to install the assembly in closed tanks with pressures of up to 4 bar (58 psi).

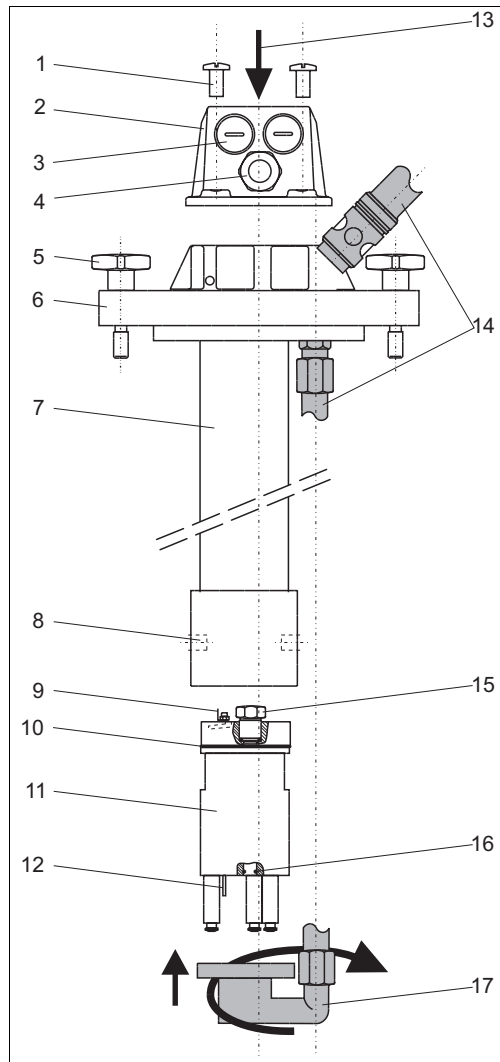
The suspended version of the assembly (mounting version D) can be installed in immersion tanks using the assembly holder CYH101. The assembly length is fixed to 1 m. The suspension bracket is made of stainless steel 1.4571 (AISI 316 Ti). Various immersion depths are possible when used in conjunction with a suspension chain.

The assembly for pendulum frame mounting (mounting version F) is designed for pendulous suspension from the pendulum frame by the retaining ring.



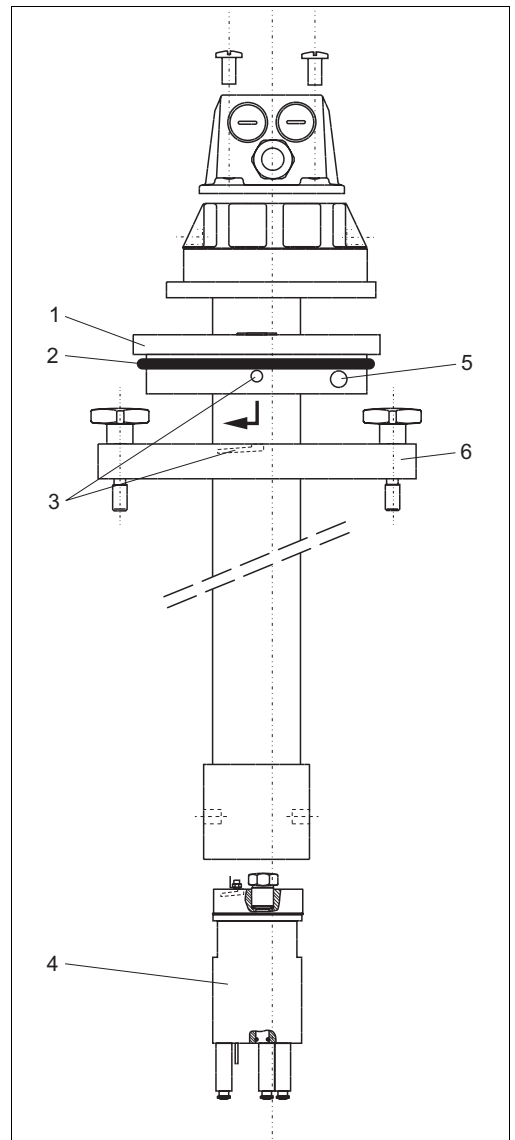
- 1 Phillips screws
- 2 Marker "final position"
- 3 Assembly pipe
- 4 Half-shells

Adjustable flange adapter



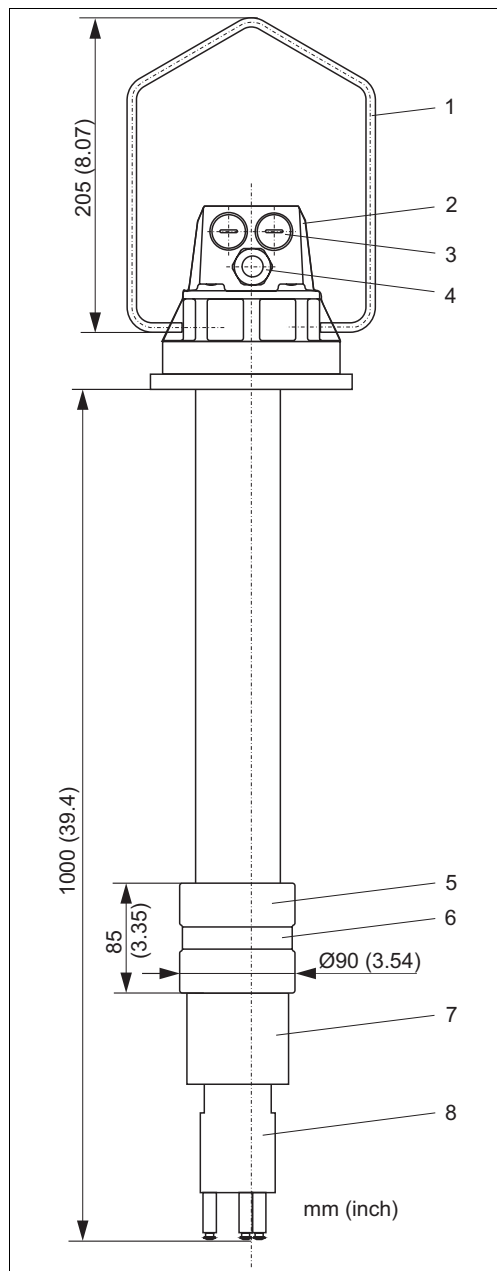
Versions A and C with flange DN 100

- 1 Phillips screw (4 pieces)
- 2 Assembly head
- 3 Dummy plug Pg 16
- 4 Cable gland Pg 13.5
- 5 Star handle screws M10 (not for pressurized version)
- 6 Flange DN 100, A: standard C: pressurized flange
- 7 Assembly pipe
- 8 Bore hole for wet bucket
- 9 AMP plug for PM connection
- 10 O-ring
- 11 Electrode holder (3 mounting positions)
- 12 PM (potential matching pin) material: stainless steel 1.4571 (AISI 316 Ti)
- 13 Punch hole for electrolyte reservoir CPY7
- 14 Accessory Chemoclean CPR30
- 15 Dummy plug
- 16 O ring for sensor installation
- 17 Accessory Chemoclean CPR30



Version B with adjustable flange DN 100

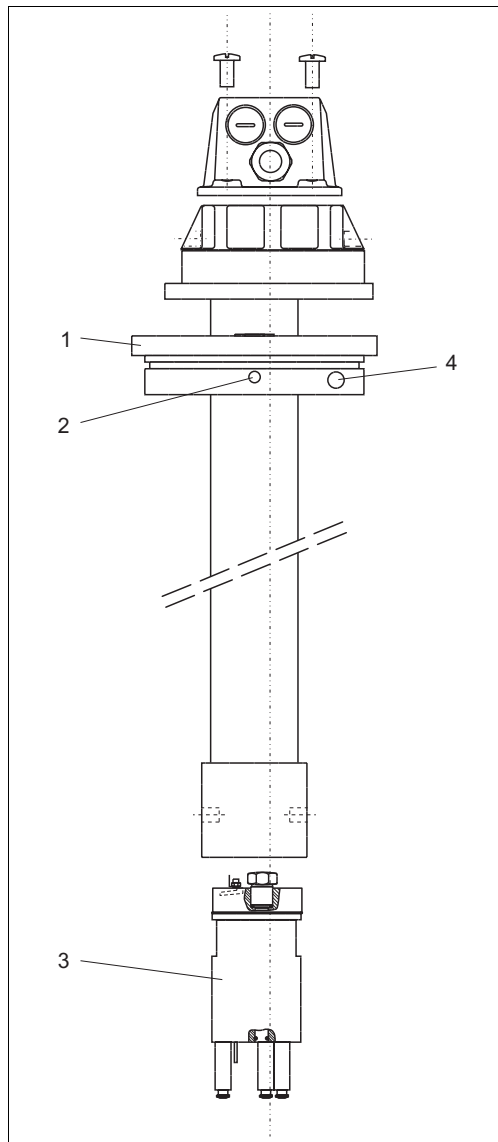
- 1 Adapter for adjustable flange (2 half-shells)
- 2 O-ring for tolerance compensation
- 3 Bayonet lock
- 4 Electrode holder (3 mounting positions)
- 5 Tensioning screws (2 pieces)
- 6 Flange DN 100



- 1 Suspension bracket (stainless steel 1.4571 (AISI 316 Ti))
- 2 Assembly head
- 3 Dummy plug Pg 16
- 4 Cable gland Pg 13.5
- 5 Weight (half-shells)
- 6 Cable clamp for fixing of the half-shells
- 7 Sleeve
- 8 Electrode holder (3 mounting positions)

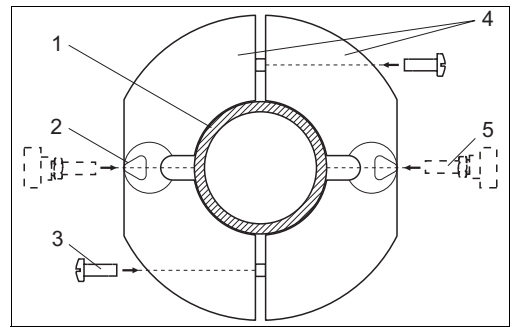
Version D with suspension bracket

40007050



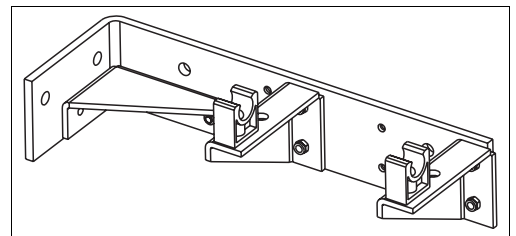
Version F for pendulum frame mounting

- 1 Retaining ring (half-shells)
- 2 Threaded hole M8 for knurled thumb screw
- 3 Sensor holder (3 mounting positions)
- 4 Tensioning screws (2 pieces) to fix the half-shells

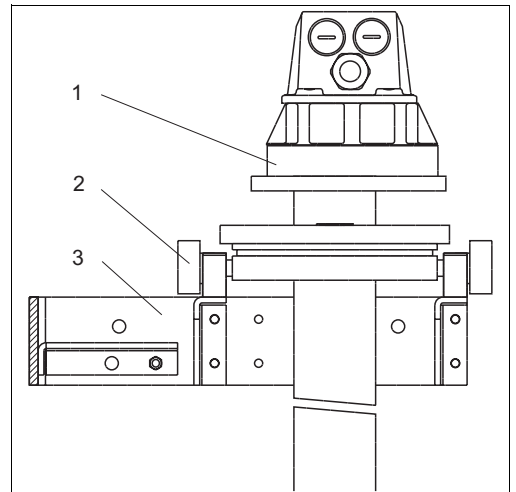


Retaining ring

- 1 Assembly pipe
- 2 Marker "final position"
- 3 Phillips screws
- 4 Half-shells
- 5 Knurled thumb screws



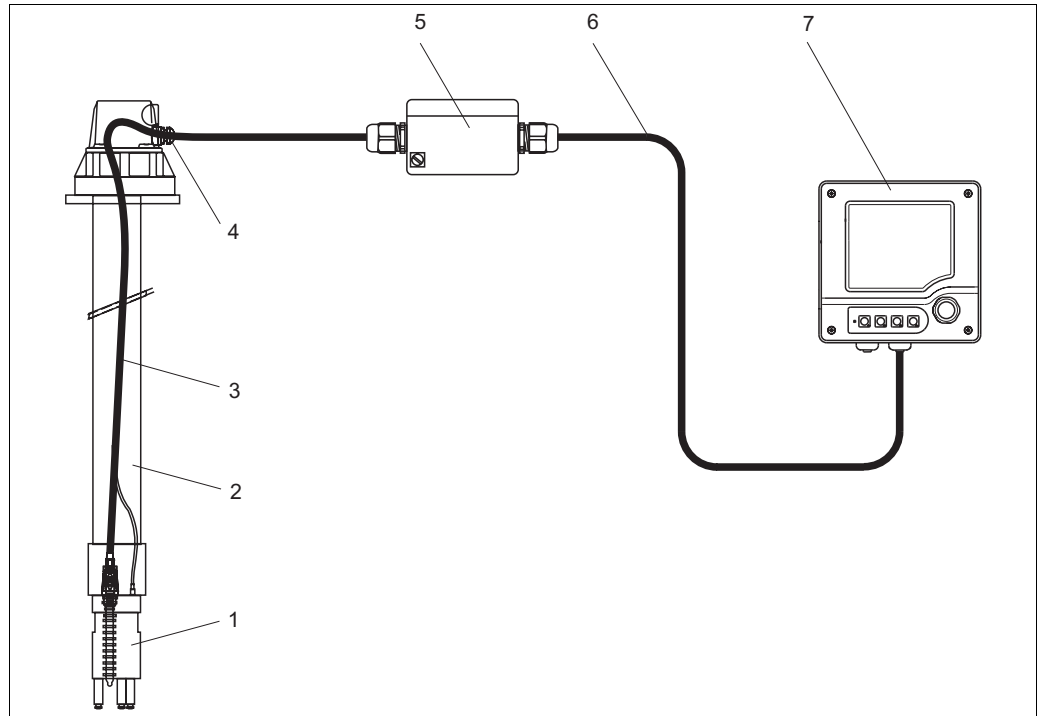
Pendulum frame



CPA111 mounted with pendulum frame

- 1 Assembly
- 2 Knurled thumb screw
- 3 Pendulum frame

## Measuring system



Example of a complete measuring system

40007038

- |   |   |   |                              |
|---|---|---|------------------------------|
| 1 | Sensor holder (3 mounting positions)      | 5 | Junction box VBA             |
| 2 | Immersion assembly Dipfit W CPA111        | 6 | Extension cable CYK71        |
| 3 | Measuring cable CPK1, CPK7, CPK9 or CPK12 | 7 | Transmitter Liquiline M CM42 |
| 4 | Cable gland Pg 13.5                       |   |                              |

## Installation

---

### Mounting

Mounting:

Version A  
Version B  
Version C  
Version D  
Version F

Flange DN 100, with additional captive star handle screws  
Adjustable flange DN 100  
Pressurized flange DN 100  
Suspension bracket; material: stainless steel 1.4571 (AISI 316 Ti)  
For pendulum frame

## Environment

---

### Ambient temperature

-10 to 80 °C (14 to 176 °F)

## Process

---

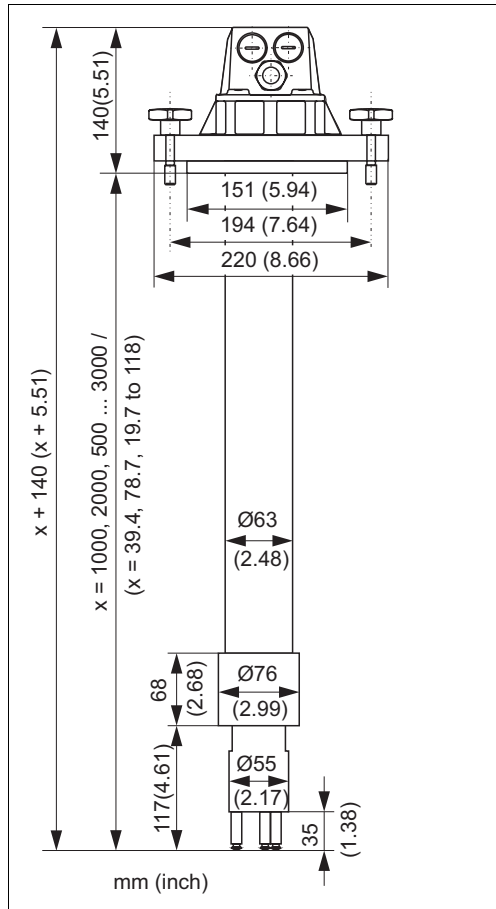
### Process temperature and pressure

Versions A, B, D, F  
Version C

unpressurized, 80 °C (176 °F)  
4 bar at 20 °C (58 psi at 68 °F),  
unpressurized at 80 °C (176 °F)

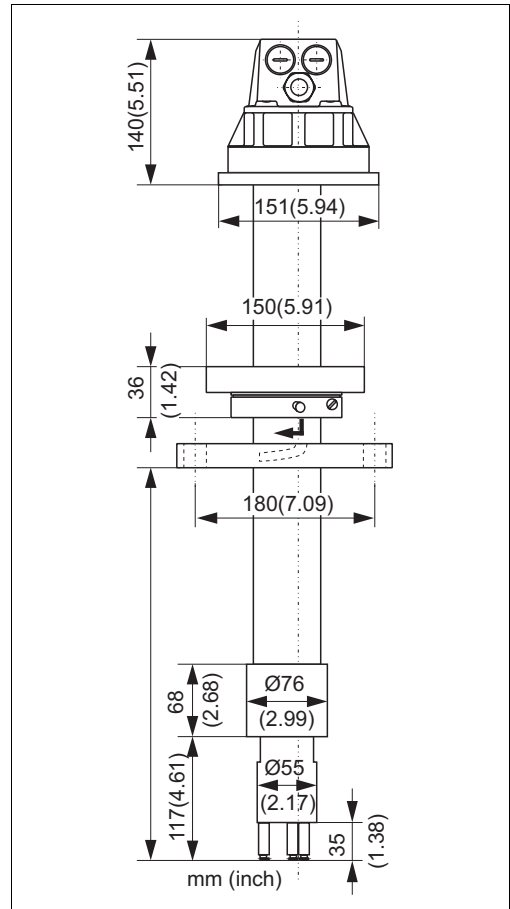
# Mechanical construction

## Dimensions



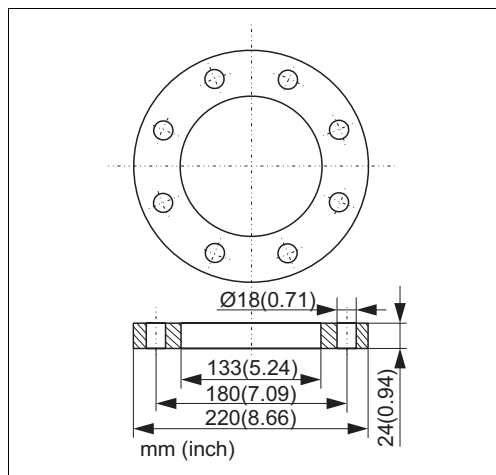
Versions A/C

a0007039



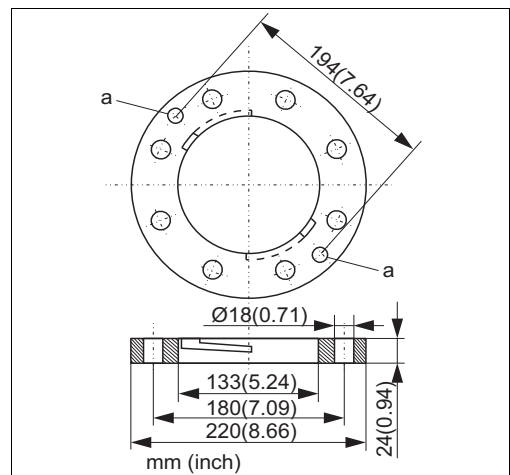
Version B

a0007040



Pressurized flange DN 100 for CPA111-C

a0007041



Flange DN 100 for CPA111-A/B

a0007046

a Through hole for star handle screws



<b>Weight</b>	approx. 4 kg (8.82 lbs)																
<b>Materials</b>	<table><tr><td>in contact with medium:</td><td></td></tr><tr><td>  sensor holder</td><td>PP-GF 20</td></tr><tr><td>  immersion pipe</td><td>PP</td></tr><tr><td>  potential matching pin</td><td>stainless steel 1.4571 (AISI 316 Ti)</td></tr><tr><td>  O-ring</td><td>EPDM</td></tr><tr><td>additionally with versions D and F:</td><td></td></tr><tr><td>  half-shells</td><td>gray cast iron, PVC coated</td></tr><tr><td>  cable clamp</td><td>stainless steel 1.4401 (AISI 316)</td></tr></table>	in contact with medium:		sensor holder	PP-GF 20	immersion pipe	PP	potential matching pin	stainless steel 1.4571 (AISI 316 Ti)	O-ring	EPDM	additionally with versions D and F:		half-shells	gray cast iron, PVC coated	cable clamp	stainless steel 1.4401 (AISI 316)
in contact with medium:																	
sensor holder	PP-GF 20																
immersion pipe	PP																
potential matching pin	stainless steel 1.4571 (AISI 316 Ti)																
O-ring	EPDM																
additionally with versions D and F:																	
half-shells	gray cast iron, PVC coated																
cable clamp	stainless steel 1.4401 (AISI 316)																
<b>Cable glands</b>	1 x Pg 13.5; 2 x Pg 16																
<b>Number of sensors</b>	max. 3																
<b>Immersion depth</b>	standard: 1000 mm (39.4 "), 2000 mm (78.8 ") special length: 500 to 3000 mm (19.7 to 118 ")																
<b>Required cross section</b>	DN 100																

## Ordering information

### Scope of delivery

The scope of delivery comprises:

- Dipfit W CPA111 assembly (ordered version)
- Operating Instructions (English)

### Product structure

		<b>Immersion depth</b>	
	0		Immersion depth: 1000 mm
	1		Immersion depth: 2000 mm
	2		Immersion depth: as specified 500 - 3000 mm
	3		Immersion depth: 500 mm
	4		Immersion depth: 1500 mm
	5		Immersion depth: 2500 mm
	6		Immersion depth: 3000 mm
		<b>Assembly material</b>	
	0		Assembly: PP; O-ring: EPDM
	1		Assembly: silicone free, PP; O-ring: EPDM
		<b>Process connection</b>	
		A	Flange DN 100, PP, pressureless
		B	Flange DN 100, PP, adjustable
		C	Flange DN 100; max. 4 bar
		D	Hanging bracket; 316 Ti
		F	For pendulum frame mounting
CPA111-			complete order code

## Accessories

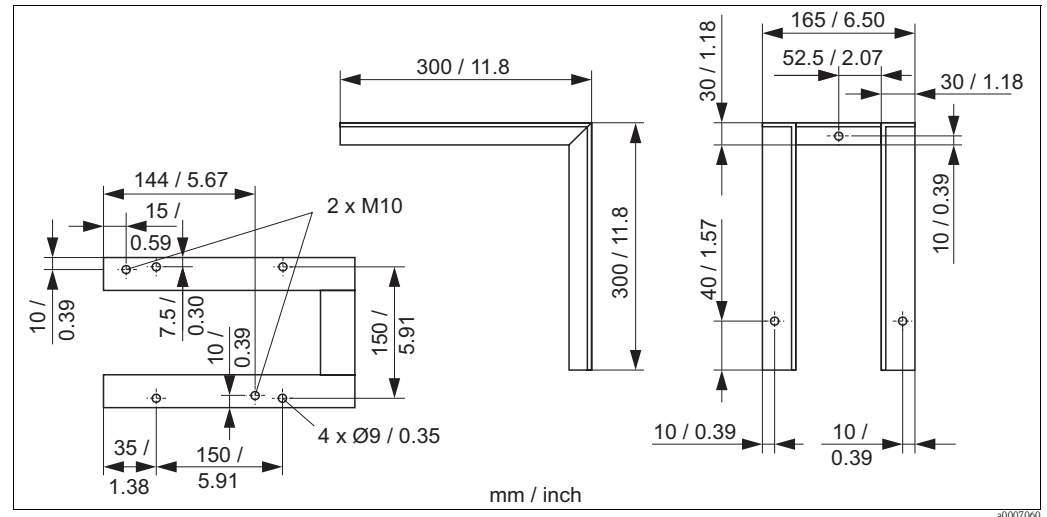
### Installation material

Immersion assembly holder CYH101

- For pH, ORP, oxygen, conductivity assemblies and for oxygen and turbidity sensors;
- Ordering acc. to product structure (Technical Information TI092C/07/en)

Mounting frame for CPA111, CPA510, CPA530 and CLA111

- Material: stainless steel 1.4301 (AISI 304)
- Order number: 50066561



*Dimensions of mounting frame*

Pendulum frame

- For pendulous suspension of CPA111, CLA111, CPA510 and CYA611 assemblies
- Order no. 50080196

Add-on kit pendulum frame

- To mount CPA111 and CLA111 at pendulum frame
- Order number: 50087873

Adjustable flange adapter DN 100

- For CPA111 and CLA111 with variable immersion depth
- Order number: 50070514

Flange DN 100 unpressurized

- For CPA111 and CLA111 suitable for the adjustable flange adapter
- Order number: 50066632

## Sensors

## Glass sensors

- Orbisint CPS11/CPS11D  
pH electrode for process applications, with PTFE diaphragm, Memosens technology as option;  
Ordering acc. to product structure, see Technical Information (TI028C/07/en)
- Orbisint CPS12/CPS12D  
ORP electrode for process applications, with PTFE diaphragm, Memosens technology as option;  
Ordering acc. to product structure, see Technical Information (TI367C/07/en)
- Ceraliquid CPS41/CPS41D  
pH electrode with ceramics diaphragm and liquid KCl electrolyte, Memosens technology as option;  
Ordering acc. to product structure, see Technical Information (TI079C/07/en)
- Ceraliquid CPS42/CPS42D  
ORP electrode with ceramics diaphragm and liquid KCl electrolyte, Memosens technology as option;  
Ordering acc. to product structure, see Technical Information (TI373C/07/en)
- Ceragel CPS71/CPS71D  
pH electrode with double chamber reference system and integrated bridge electrolyte,  
Memosens technology as option;  
Ordering acc. to product structure, see Technical Information (TI245C/07/en)
- Ceragel CPS72/CPS72D  
ORP electrode with double chamber reference system and integrated bridge electrolyte, Memosens  
technology as option;  
Ordering acc. to product structure, see Technical Information (TI374C/07/en)
- Orbipore CPS91/CPS91D  
pH electrode with open aperture for media with high dirt load, Memosens technology as option;  
Ordering acc. to product structure, see Technical Information (TI375C/07/en)

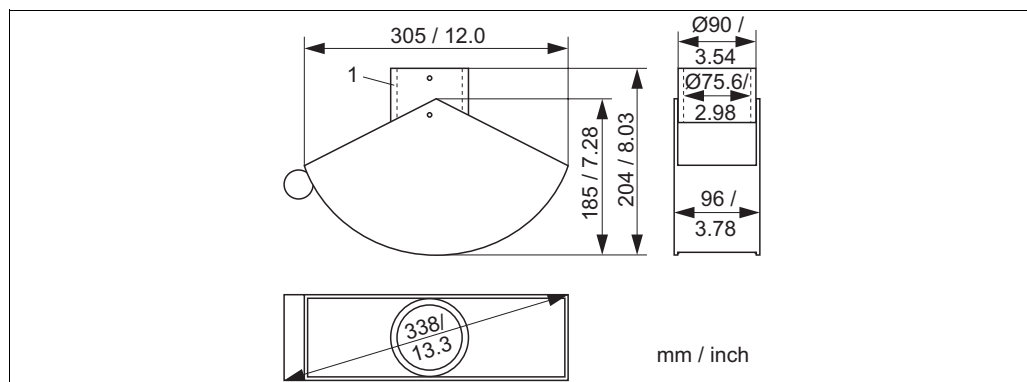
## ISFET sensors

- Tophit CPS471  
Sterilizable and autoclavable ISFET sensor for food and pharmaceuticals, process technology, water  
treatment and biotechnology;  
Ordering acc. to product structure, see Technical Information (TI283C/07/en)
- Tophit CPS441  
Sterilizable ISFET sensor for media with low conductivity, with liquid KCl electrolyte;  
Ordering acc. to product structure, see Technical Information (TI352C/07/en)
- Tophit CPS491  
ISFET sensor with open aperture for media with high dirt load;  
Ordering acc. to product structure, see Technical Information (TI377C/07/en)

## Calibration accessories

Wet bucket for CPA111

- To prevent drying out of electrodes at too low water levels
- Can be used in open containers, tanks or channels
- Material: PP
- Order no.: 50066569

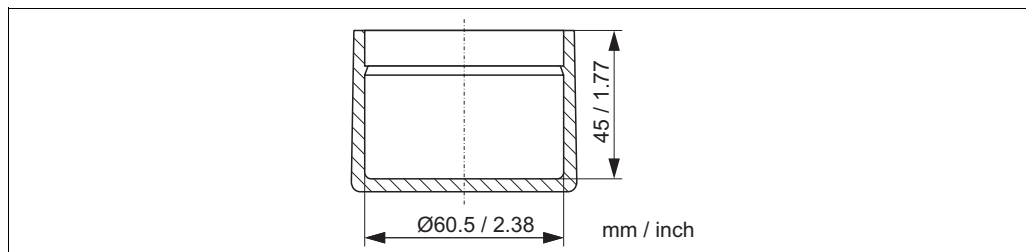


Dimensions of wet bucket

1 Distance pipe

Calibration cap for CPA111

- Designed for calibration of pH/ORP sensors
- Short-time mounting possibility at the distance bolts of the sensor holder
- Material: PP
- Order no.: 50066570



Dimensions of the calibration cap; max. filling volume 70 ml (2.37 fl. oz)

**High-quality buffer solutions of Endress+Hauser**

The secondary buffer solutions have been referenced to primary reference material of the PTB (German Federal Physico-technical Institute) and to standard reference material of NIST (National Institute of Standards and Technology) according to DIN 19266 by a DKD (German Calibration Service) accredited laboratory.

pH value	
A	pH 2.00 (accuracy ± 0.02 pH)
C	pH 4.00 (accuracy ± 0.02 pH)
E	pH 7.00 (accuracy ± 0.02 pH)
G	pH 9.00 (accuracy ± 0.02 pH)
I	pH 9.20 (accuracy ± 0.02 pH)
K	pH 10.00 (accuracy ± 0.05 pH)
M	pH 12.00 (accuracy ± 0.05 pH)

Quantity	
01	20 x 18 ml (0.68 fl.oz) only buffer solutions pH 4.00 and 7.00
02	250 ml (8.45 fl.oz)
10	1000 ml (0.26 US gal)
50	5000 ml (1.32 US gal) canister for Topcal S

Certificates	
A	buffer analysis certificate

Version	
1	standard

CPY20-				complete order code
--------	--	--	--	---------------------

Technical buffer solutions for ORP electrodes

- +220 mV, pH 7.0, 100 ml (3.4 fl.oz.); order no. CPY3-0
- +468 mV, pH 0.1, 100 ml (3.4 fl.oz.); order no. CPY3-1

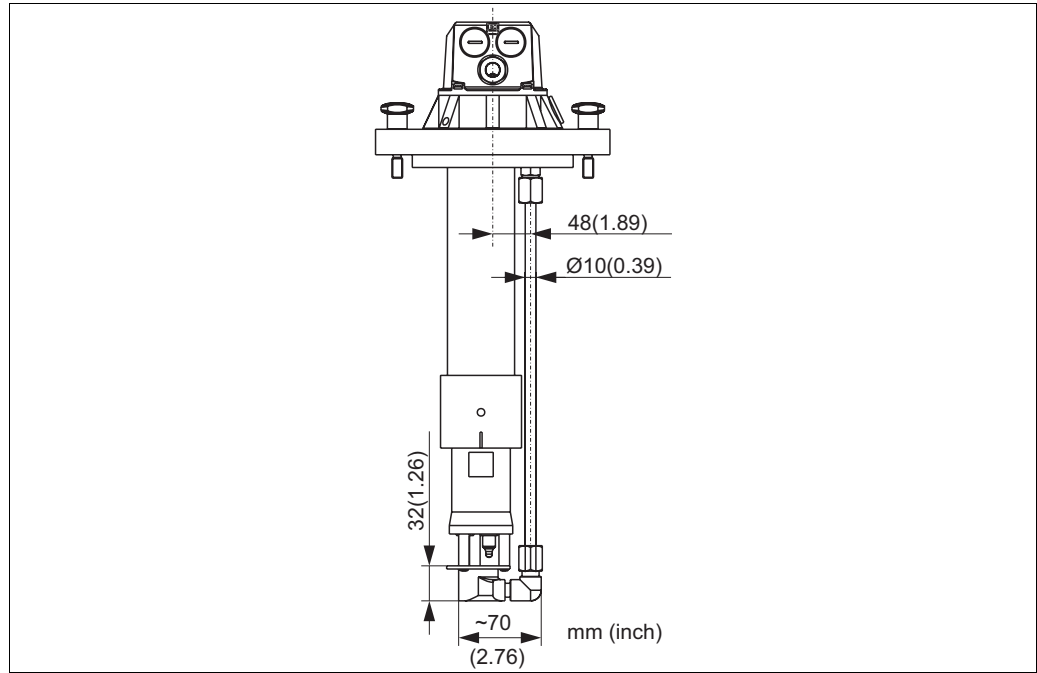
**Transmitter**

- **Liquiline M CM42**  
Modular two-wire transmitter, stainless steel or plastic, field or panel instrument, various Ex approvals (ATEX, FM, CSA, Nepsi, TIIS), HART, PROFIBUS or FOUNDATION Fieldbus available  
Ordering acc. to product structure, see Technical Information (TI381C/07/en)
- **Liquisys M CPM223/253**  
Transmitter for pH and ORP, field or panel-mounted housing, HART or PROFIBUS available  
Ordering acc. to product structure, see Technical Information (TI194C/07/en)
- **Mycom S CPM153**  
Transmitter for pH and ORP, one or two channel version, Ex or non-Ex, HART or PROFIBUS available  
Ordering acc. to product structure, see Technical Information (TI233C/07/en)

**Cleaning system**

**Chemoclean CPR30**

- Automatic cleaning system for sensors



CPA111 with Chemoclean CPR30

- Ordering according to product structure

<b>Design, material</b>			
0	CPA111, PP		
<b>Immersion depth</b>			
0	1000 mm		
1	2000 mm		
2	special length 500 ... 3000 mm		
<b>Version</b>			
0	standard		
CPR30-			complete order code

**Chemoclean CPR31**

- Automatic cleaning system for sensors
- CPR31 will be installed at one of three mounting position instead of a sensor
- Ordering according to product structure

<b>Spray head</b>			
2	PVDF		
<b>Seal</b>			
1	EPDM		
2	Viton		
<b>Equipment</b>			
10	Basic version		
20	Spray head silicone free		
CPR31-			complete order code



---

## Instruments International

Endress+Hauser  
Instruments International AG  
Kaegenstrasse 2  
4153 Reinach  
Switzerland

Tel.+41 61 715 81 00  
Fax+41 61 715 25 00  
[www.endress.com](http://www.endress.com)  
[info@ii.endress.com](mailto:info@ii.endress.com)

**Endress+Hauser**   
People for Process Automation